

# 2024 Tree Plant Program

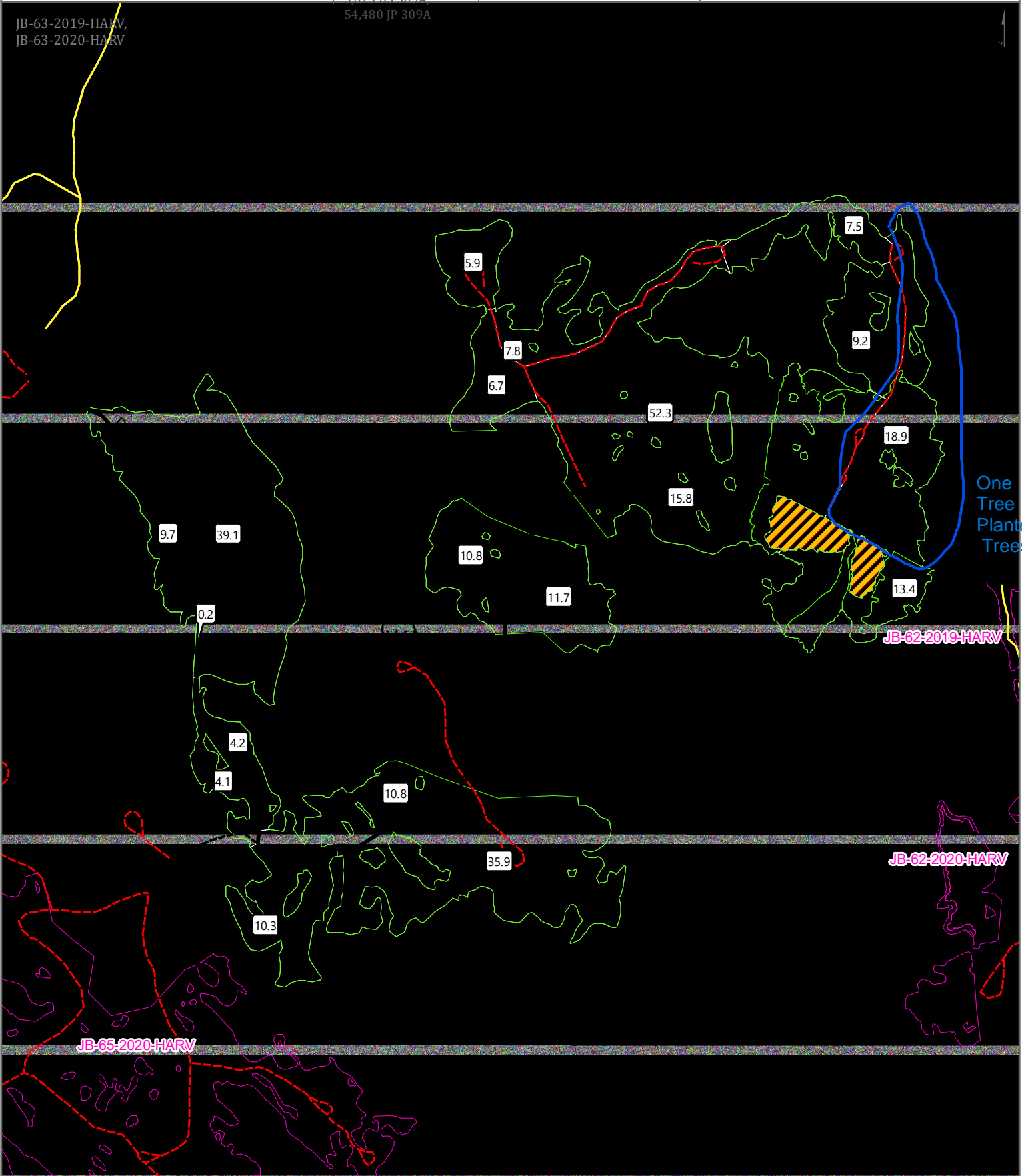
JB-63  
246.9ha

**Seedzone: 3**  
**Access: Ground**  
**Seedlings:**  
 25,804 BS,  
 367,713 JP,  
 3,823 BS 309A,  
 54,480 JP 309A

TRUCK access from Devils Lake North Road

- |                  |                       |                    |
|------------------|-----------------------|--------------------|
| Planting Area    | No Plant Roads        | PTH                |
| Contingency      | Plant Roads           | PR                 |
| No Plant areas   | <b>Transportation</b> | Other Roads        |
| Planted Areas    | All-Weather           | Rail               |
| Planting Program | Seasonal              | Transmission lines |
| Rocky Ground     |                       |                    |

JB-63-2019-HARV,  
JB-63-2020-HARV



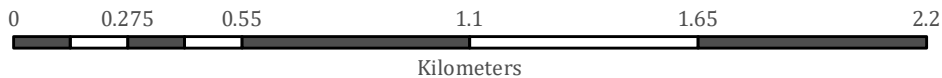
One Tree Planted Trees

JB-62-2019-HARV

JB-62-2020-HARV

JB-65-2020-HARV

1:18,220



Date: 4/19/2024